

MAGDALENA LOBBY

Concept

The “Magdalena” is high-tech futuristic architectural endeavor and it is employing most advanced technological systems and materials.

1. The elevator wall

The center piece of the elevator wall is structured from 5 panels of 2” thick white water laminated glass with color inserted to create warm white glare generated by fiber optics light delivery system. The area above the elevator door is laid by deep red marble. The sidewalls are made of warm gray travertine.

2. Additional walls

All made of warm gray travertine.

3. Front desk

The front desk base is made of black marble blocks. Water white laminated 2” glass panel is separating the base from the top of the desk, which is made of a single block of 4” red marble with highly polished surfaces. The wall behind the front desk is made of 5 panels of 2” thick laminated water white laminated glass and illuminated by fiber optics.

4. Lighting

Lighting is created from 3 large rectangular structures fabricated from 2” water white acid washed laminated glass with gold yellow color insert. The fiber optics light is distributed through this fixture.

5. Floors

Floors are made of light gray slate tiles. Two steps separating the two lobby areas are made of red marble. The glass wall between the elevator entrances continues through the floor until it reaches steps. The glass panels on the floor are also illuminated by fiber optics.

MAGDALENA LOBBY

Concept

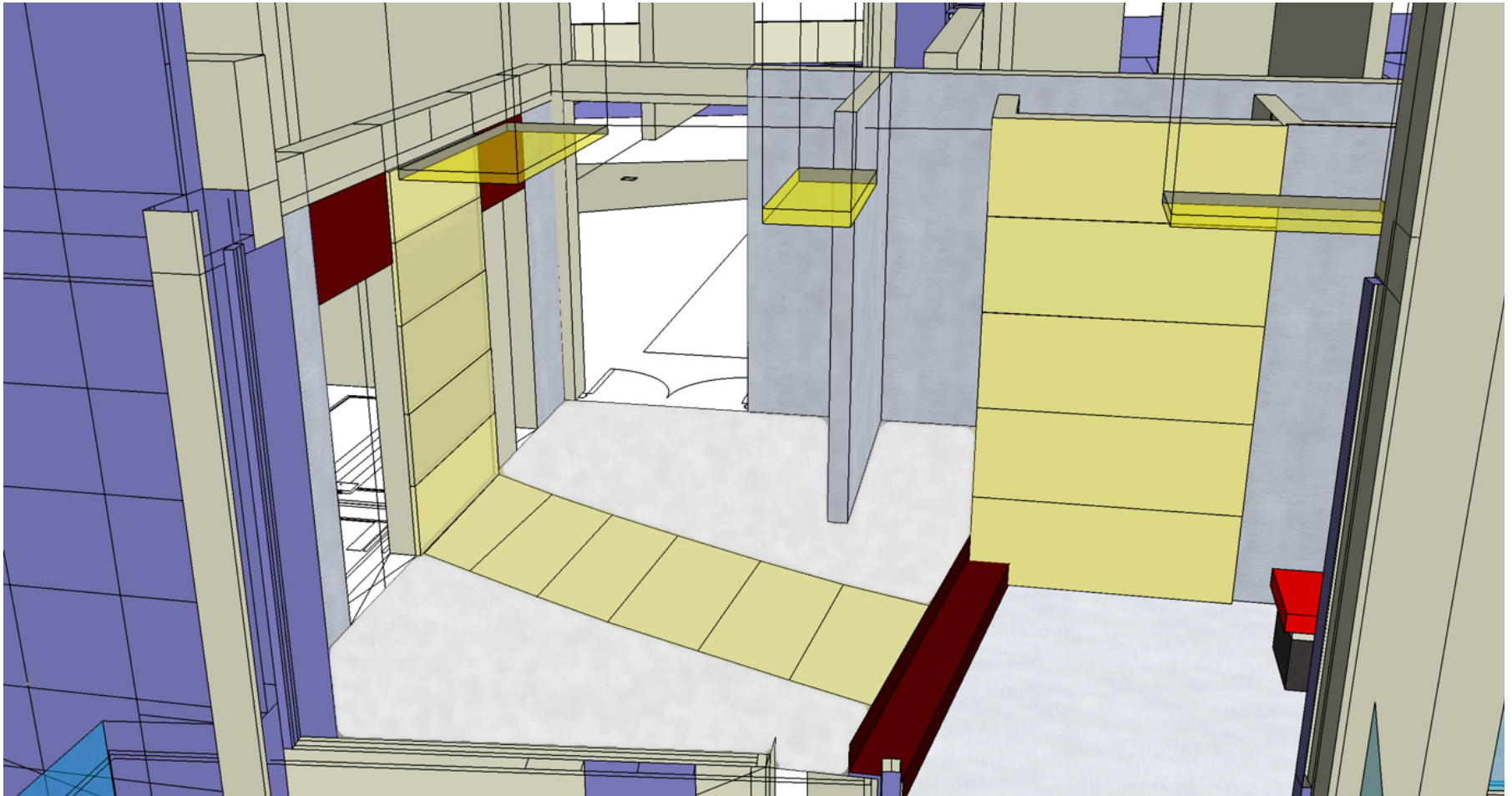
The “Magdalena” is high-tech futuristic architectural endeavor and it is employing most advanced technological systems and materials.

The elevator wall - the center piece of the elevator wall is structured from 5 panels of 2” thick white water laminated glass with color inserted to create warm white glare generated by fiber optics light delivery system. The area above the elevator door is laid by deep red marble. The sidewalls are made of warm gray travertine.

Additional walls - all made of warm gray travertine.

Lighting - is created from 3 large rectangular structures fabricated from 2” water white acid washed laminated glass with gold yellow color insert. The fiber optics light is distributed through this fixture.

Floors - are made of light gray slate tiles. Two steps separating the two lobby areas are made of red marble. The glass wall between the elevator entrances continues through the floor until it reaches steps. The glass panels on the floor are also illuminated by fiber optics.



MAGDALENA LOBBY

Additional walls - all made of warm gray travertine.

Lighting - is created from 3 large rectangular structures fabricated from 2" water white acid washed laminated glass with gold yellow color insert. The fiber optics light is distributed through this fixture.

The front desk base is made of black marble blocks. Water white laminated 2" glass panel is separating the base from the top of the desk, which is made of a single block of 4" red marble with highly polished surfaces. The wall behind the front desk is made of 5 panels of 2" thick laminated water white laminated glass and illuminated by fiber optics.

Floors - are made of light gray slate tiles. Two steps separating the two lobby areas are made of red marble. The glass wall between the elevator entrances continues through the floor until it reaches steps. The glass panels on the floor are also illuminated by fiber optics.

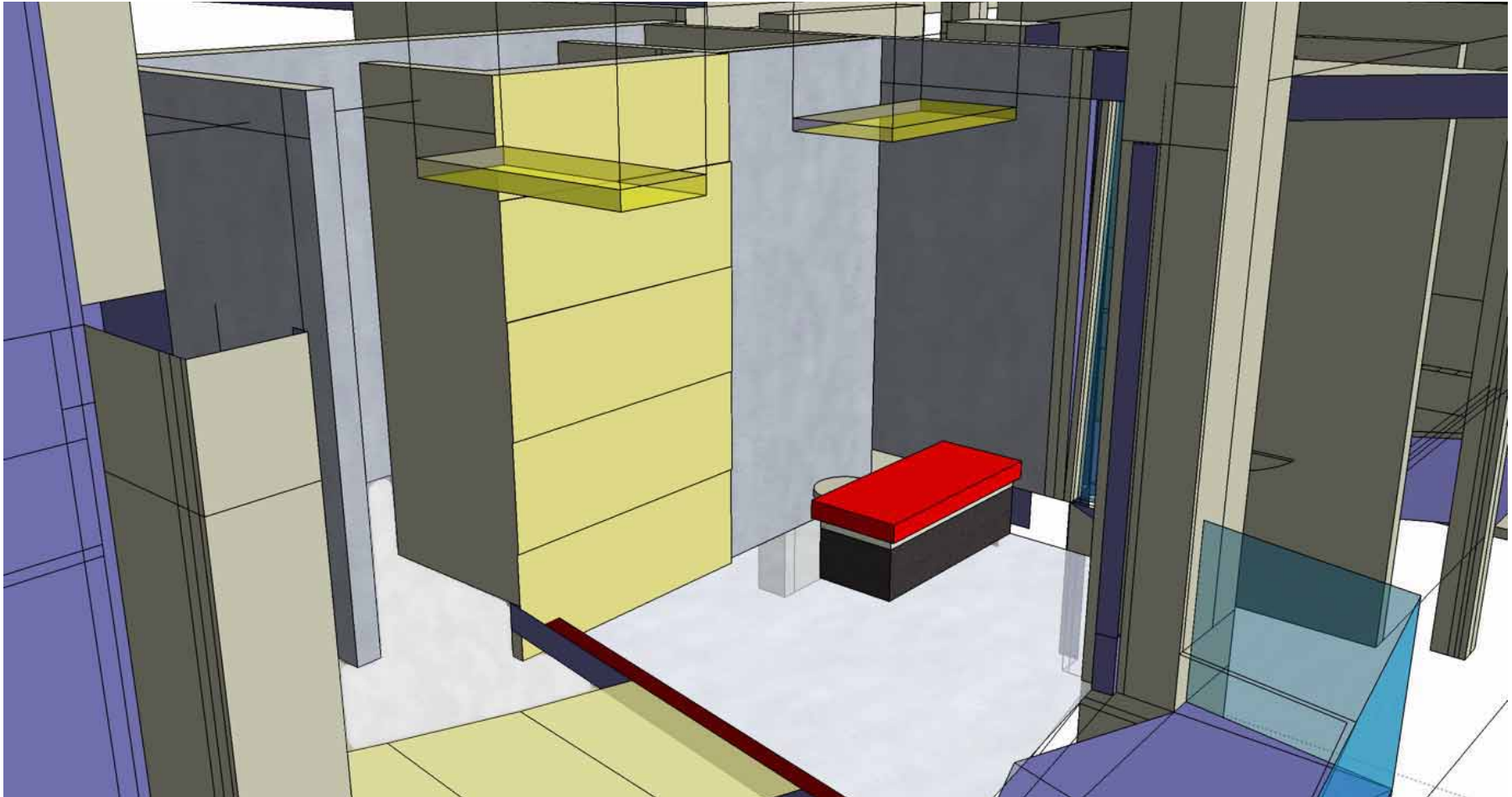


MAGDALENA LOBBY

Additional walls - all made of warm gray travertine.

The front desk - the base is made of black marble blocks. Water white laminated 2" glass panel is separating the base from the top of the desk, which is made of a single block of 4" red marble with highly polished surfaces. The wall behind the front desk is made of 5 panels of 2" thick laminated water white laminated glass and illuminated by fiber optics.

Floors - are made of light gray slate tiles. Two steps separating the two lobby areas are made of red marble. The glass wall between the elevator entrances continues through the floor until it reaches steps. The glass panels on the floor are also illuminated by fiber optics.



STUDIO LEVITATION 2006 by PAVEL KRAUS



Material: Acid washed laminated water white glass, 48" x 16" x 2" each element.

Pavel Kraus / KRAUSTUDIO
kraustudio@aol.com
www.pavelkraus.com
917-297-1070

GLASS LEVITATION/COLOR by PAVEL KRAUS

